









The role of cardiopulmonary exercise testing in predicting mortality and morbidity in people with congenital heart disease: a systematic review and meta-analysis

Curtis A. Wadey ¹, Max E. Weston ^{1,2†}, Dan Mihai Dorobantu ^{1,3†}, Guido E. Pieleas ^{4,5,6}, Graham Stuart ^{4,5}, Alan R. Barker ¹, Rod S. Taylor ⁷, and Craig A. Williams ^{1*}

¹Children's Health & Exercise Research Centre (CHERC), College of Life and Environmental Sciences, St. Luke's Campus, University of Exeter, Heavitree Road, Exeter EX1 2LU, UK; ²School of Human Movement and Nutrition Sciences, Human Movement Studies Building, University of Queensland, QLD 4067, Brisbane, Australia; ³School of Population Health Sciences, University of Bristol, BS8 1QU, Bristol, UK; ⁴National Institute for Health Research (NIHR) Cardiovascular Biomedical Research Centre, Bristol Heart Institute, Terrell St, BS2 8ED, Bristol, UK; ⁵Bristol Congenital Heart Centre, The Bristol Heart Institute, University Hospitals Bristol NHS Foundation Trust, Upper Maudlin Street, BS2 8HW, Bristol, UK; ⁶Institute of Sport Exercise and Health (ISEH), University College London, 170 Tottenham Court Rd, W1T 7HA, London, UK; and ⁷MRC/CSO Social and Public Health Sciences Unit & Robertson Centre for Biostatistics, Institute of Health and Well Being, University of Glasgow, 99 Berkeley Street, G3 7HR, Glasgow, UK

Received 26 April 2021; revised 10 June 2021; editorial decision 9 July 2021; online publish-ahead-of-print 18 August 2021

Aims

The role of cardiopulmonary exercise testing (CPET) in predicting major adverse cardiovascular events (MACE) in people with congenital heart disease (ConHD) is unknown. A systematic review with meta-analysis was conducted to report the associations between CPET parameters and MACE in people with ConHD.

Methods and results

Electronic databases were systematically searched on 30 April 2020 for eligible publications. Two authors independently screened publications for inclusion, extracted study data, and performed risk of bias assessment. Primary meta-analysis pooled univariate hazard ratios across studies. A total of 34 studies (18 335 participants; 26.2 ± 10.1 years; 54% ± 16% male) were pooled into a meta-analysis. More than 20 different CPET prognostic factors were reported across 6 ConHD types. Of the 34 studies included in the meta-analysis, 10 (29%), 23 (68%), and 1 (3%) were judged as a low, medium, and high risk of bias, respectively. Primary univariate meta-analysis showed consistent evidence that improved peak and submaximal CPET measures are associated with a reduce risk of MACE. This association was supported by a secondary meta-analysis of multivariate estimates and individual studies that could not be numerically pooled.

Conclusion

Various maximal and submaximal CPET measures are prognostic of MACE across a variety of ConHD diagnoses. Further well-conducted prospective multicentre cohort studies are needed to confirm these findings.

Keywords

Congenital abnormalities • Fontan • Tetralogy of Fallot • Cardiorespiratory fitness • Prognosis

* Corresponding author. Tel: +441392724890, Email: C.A.Williams@exeter.ac.uk

†These authors shared the second authorship and contributed equally to this work.

© The Author(s) 2021. Published by Oxford University Press on behalf of the European Society of Cardiology.

This is an Open Access article distributed under the terms of the Creative Commons Attribution License (<https://creativecommons.org/licenses/by/4.0/>), which permits unrestricted reuse, distribution, and reproduction in any medium, provided the original work is properly cited.

Implications for research and practice:

In future all studies should:

1. Explicitly report any adverse events that occurred during CPET.
2. If clinically appropriate and feasible, studies should confirm a plateau in oxygen consumption to validate a peak effort.
3. Prospectively register their trials and follow the appropriate reporting frameworks (REMARK for prognostic factors).
4. Report the hazard ratio (or equivalent summary statistic) of all scales of the prognostic factor and avoid dichotomising continuous predictor data.
5. Control for common covariates such as age at the test and resting oxygen saturations as a minimum.

Introduction

Cardiorespiratory fitness (CRF) can be assessed using cardiopulmonary exercise testing (CPET) and can be quantified using parameters such as peak oxygen consumption (peak $\dot{V}O_2$), exercise efficiency slopes [i.e. oxygen uptake efficiency slope (OUES)], submaximal ventilatory thresholds [i.e. gas exchange threshold (GET)], and other physiological responses to an exercise stimulus [i.e. heart rate reserve (HRR), exercise oscillatory ventilation (EOV)].^{1,2} Cardiopulmonary exercise testing is recommended as a part of routine care in people with congenital heart disease (ConHD) by the European Society of Cardiology.³

Congenital heart disease represents a spectrum of cardiac (and/or intrathoracic vessel) defects present at birth,⁴ and is the most common birth defect with approximately 1% of the global population affected.⁵ People with ConHD can have reduced CRF compared to healthy controls,^{6–8} and a 2018 systematic review reported that reduced CRF is associated with major adverse cardiovascular events (MACE) in people with Fontan circulations.⁹ Major adverse cardiovascular events is a widely used composite clinical endpoint in cardiovascular research, encompassing a range of morbidities and mortalities. Although it does not have a standardized definition, it allows researchers to capture patient-important outcomes, which may vary due to specific populations or interventions.

Prognostic factors research aims to associate clinical parameters (i.e. CRF), to future health status (i.e. MACE). Prognostic factors are important to identify as they can be used to inform treatment options, risk stratification, and can aid in the design and evaluation of clinical trials.¹⁰ The 2020 Cochrane review on 'physical activity interventions for people with ConHD', called for an urgent review on the prognostic importance of CRF, allowing future research to design and evaluate interventions more effectively.¹¹

Whilst many studies have been published on the associations between measures of CRF-derived from CPETs and future outcome in ConHD, no previous systematic review has comprehensively synthesized this evidence across all types of ConHD. Therefore, the aim of the current paper was to assess the role of CPET in the prognosis of MACE in all types of ConHD. This study was conducted using contemporary systematic review and meta-analysis methodological guidance.^{10,12}

Methods

Registration

The protocol for this systematic review was prospectively registered on Prospero (CRD42020186518) and published in the *Journal of Congenital Cardiology*.¹³ Ethical approval was not required.

Participants and study types

Studies that reported data on patients with a confirmed diagnosis of structural ConHD were included (Table 1). Degenerative, infective, and other inherited pathologies (i.e. channelopathy, cardiomyopathy) were excluded.

All study designs that addressed the research question were considered for inclusion. Only peer-reviewed full-text papers written in English were included. Previous reviews or case reports were excluded.

Cardiopulmonary exercise testing methods

Cardiopulmonary exercise testings protocols using a cycle or treadmill ergometer that simultaneously measured pulmonary gas exchange were included. Any CRF parameter that can be obtained from a CPET was eligible for inclusion. Tests that used other exercise modalities and/or did not directly measure pulmonary gas exchange were excluded.

Outcomes

Studies that reported MACE endpoints were included. Where studies reported several endpoints including a MACE composite (i.e. death, hospitalization, MACE), the MACE composite endpoint was extracted preferentially. Finally, where a composite MACE outcome was not reported by a study, but a more specific endpoint was (i.e. death, transplant, initiation of a ventricular assist device, cardiac, and/or unscheduled hospitalization), these outcomes were pooled within the analyses.

Search methods

The following electronic databases were searched: Allied and Complementary Medicine Database (EBSCO), CINAHL® Complete (EBSCO), SPORTDiscus (EBSCO), Medline (Ovid), Embase (Ovid), Web of Science (Thomson Reuters), and Cochrane Central Register of Controlled Trials.

Searches were performed on 30 April 2020 with no lower limit on publication date. Forward and backward citation chasing was also performed. The search terms included prognosis (mortality, morbidity, event-free survival etc.) with ConHD [Fontan, Tetralogy of Fallot (ToF) etc.] and CPET parameters (peak $\dot{V}O_2$, OUES etc.). The full search strategy is provided in the published protocol.¹³

Data collection

Two independent researchers (C.A.W. and M.E.W.) screened titles and abstracts using Covidence® (Veritas Health Innovation Ltd., Melbourne, Australia). Full texts were retrieved and read to confirm their inclusion by two independent researchers [C.A.W. (100%), M.E.W. (25%), and D.M.D. (75%)]. Any disagreements were resolved by consensus; reasons for full-text exclusion have been made explicit in [Supplementary material online](#), and the selection process has been reported using a PRISMA flow diagram (Figure 1).^{14,15}

Data were extracted independently by two researchers (C.A.W. and D.M.D.) using a piloted version of the 'critical appraisal and data extraction for systematic reviews of prediction modelling and prognostic factors studies' (CHARMS-PF) checklist.¹⁶ Odds and hazard ratios (HRs) with 95% confidence intervals (95% CIs) were extracted for each CPET parameter and type of ConHD. When studies reported the individual

Table 1 Summary of patients pooled into the meta-analysis

ConHD diagnoses	All cohorts (paediatric arms)	No. of all patients (paediatric only)	Pooled mean age and SD (paediatric mean age and SD)	Mean percentage male (%) and SD
Fontan	12 (2)	1897 (204)	21.1 ± 4.6 (13.3 ± 4.6)	59.5 ± 9.4
Tetralogy of Fallot	10 (1)	2595 (40)	28.4 ± 9.0 (9.0 ± 0)	58.9 ± 7.9
Mixture of ConHD	8 (0)	16 047	32.5 ± 2.5	54 ± 3.4
Transposition of the great arteries	5 (0)	512	31.5 ± 4.5	63.9 ± 5.7
Ebstein anomaly	2 (0)	117	37.8 ± 0 ^a	49 ± 0 ^a
Repaired coarctation of the aorta	1 (0)	138	40 ± 0 ^a	59 ± 0 ^a

^aOnly one study reports numeric statistic; transposition of the great arteries cohort are people with a systemic right ventricle post-Senning/Mustard procedure.

ConHD subgroups and the overall pooled estimates (of multiple diagnoses) the individual ConHD subgroup data were extracted preferentially. Data presented in figures were extracted using Web Plot Digitizer (Ankit Rohatgi, version 4.4, CA, USA); and when not reported (or directly calculable from 95% CI), standard errors were estimated using the mean HR and *P*-value using validated methods.¹⁷

Risk of bias assessment

Risk of Bias (RoB) assessments were conducted by C.A.W. and D.M.D. independently using the Cochrane adopted 'Quality in Prognosis Studies' (QUIPS) tool.¹⁸ Six domains were evaluated: study participation, study attrition, prognostic factors, outcome measurement, study confounding, and statistical analysis. Disagreements were discussed until consensus was reached or were arbitrated by a third author (C.A.W.). Each domain was graded as either having low, moderate, or high RoB, and written justifications were provided ([Supplementary material online](#)).

Data synthesis and investigation of heterogeneity

Der Simonian–Laird meta-analysis with 95% CI were performed on log-transformed HR. Random effects meta-analysis was used for all analyses due to the anticipated and present heterogeneity. Congenital heart disease diagnoses and CPET parameters were combined; where two or more studies reported the same ConHD/CPET combination and a univariate HR they were pooled into the 'primary analysis'. Only CPET parameters reported on a continuous scale were pooled. Studies that reported HR computed from dichotomous CPET parameters (i.e. peak $\dot{V}O_2 < 18 \text{ mL}\cdot\text{kg}^{-1}\cdot\text{min}^{-1}$, or present/absent), and/or only had one ConHD/CPET combination were pooled separately ([Supplementary material online](#)). The ventilatory equivalent for carbon dioxide ($\dot{V}_E/\dot{V}CO_2$) slope has the opposite direction to other CPET variables (i.e. lower values indicate better CRF), to pool this variable in the analysis the direction of the effect was corrected for.

A 'secondary analysis' was produced to analyse studies that reported multivariate data. The univariate and multivariate associations from these studies were analysed and presented side-by-side. Studies that performed multiple bivariate analyses (controlled for one covariate at a time) were included; however, the covariate with the most conservative *P*-value was chosen to enter the analysis, avoiding double counting. Hazard ratios computed from CPET parameters using dichotomous scales were again excluded from the analyses and are presented in [Table 3](#) and [Supplementary material online](#). To aid transparency of the covariates and

analyses methods utilized by the individual studies, multivariate data were also analysed using synthesis without meta-analysis SWiM.¹⁹

A separate meta-analysis for each CPET parameter with the ConHD diagnoses entered as a subgroup can be found in [Supplementary material online](#). Due to the different scales being reported (i.e. % predicted, $\text{mL}\cdot\text{kg}^{-1}\cdot\text{min}^{-1}$) a second subgroup analysis was produced, and small study effects were investigated using funnel plots when ≥ 10 studies were present. Results are reported as mean and standard deviations or mean and 95% CIs. All analyses were conducted using Stata/SE 16.0 (StataCorp LLC, USA), and the syntax can be found in the [Supplementary material online](#).

Results

Study selection

Following deduplication, database searches produced 4420 references. Following screening, 212 full-text articles were assessed for eligibility, with 48 studies included ([Figure 1](#)).

Characteristics of included studies

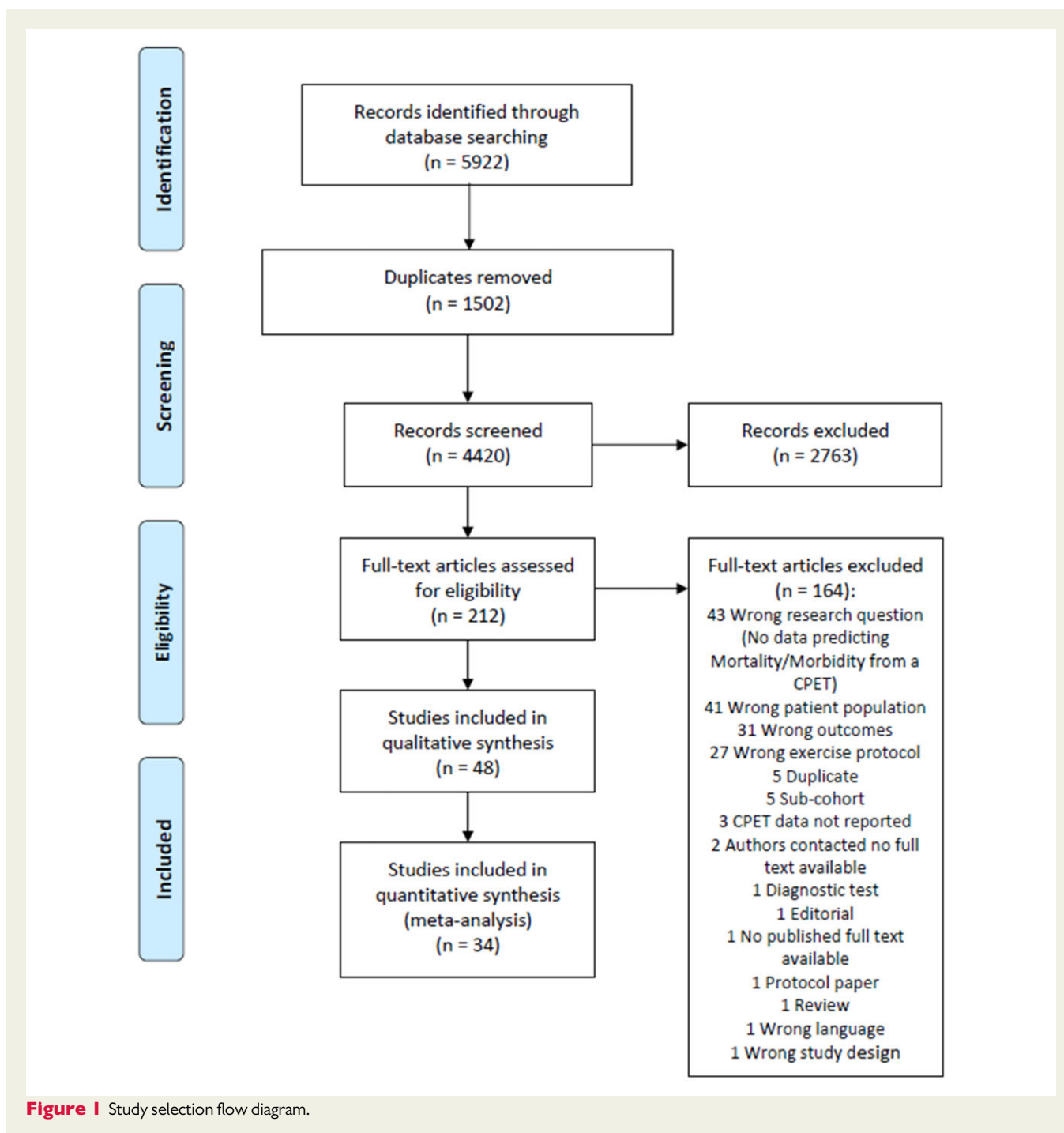
Of the 48 studies, 34 provided data that allowed them to be meta-analysed.^{20–53} The remaining 14 studies were analysed using SWiM.^{54–67} For further information on studies that were analysed using only SWiM, see the subheading 'SWiM summary' and [Supplementary material online](#).

SWiM summary

Of the 14 studies that were not pooled into meta-analysis: 9 were not pooled as they used other statistical methods, 1 did not report numeric HR associations, 2 assessed CPET trajectory or did not use a CPET parameter as an index prognostic factor, and 2 were pre-operative/transplant evaluation. Therefore, pooling would not yield interpretable results. The results reported by these studies were not different to the meta-analysed data reported by the current review, see [Supplementary material online](#). The following sections detail studies that were entered into meta-analysis only.

Participants

All available patients with structural ConHD were included. Six ConHD populations were identified, with adult data reported in



32 studies/arms and paediatric data (<18 years of age) were reported in 3 studies/arms.^{39,44,50}

Index prognostic factors

Table 2 reports the CPET parameters included within meta-analysis. All studies performed the CPET during routine care within a hospital setting. Studies performed CPETs using either a cycle ergometer ($n=16$), a treadmill ($n=24$), a combination of cycle or treadmill ergometers ($n=5$),^{26,29,45,51,66} or did not explicitly report their exercise modality ($n=3$) (see [Supplementary material online](#)). Exercise protocols included the Bruce, modified Bruce, Naughton, step, or

ramp. No study confirmed a plateau of oxygen consumption or performed a supramaximal exercise bout to confirm a maximal effort; instead, they used secondary criteria such as respiratory exchange ratio (RER) with a range of cut-offs to validate a maximal test.

Comparator prognostic factors

Table 3 presents the characteristics of included studies and the various covariates that were considered compared to those that were entered in the final multivariate models. Common covariates were age, sex, electrocardiogram parameters, other CPET variables, and cardiac structure/function. However, it was uncommon for studies

Table 2 CPET parameters in meta-analysis

CPET parameters	All studies	No. of patients
Peak $\dot{V}O_2$	32	20 372
$\dot{V}_E/\dot{V}CO_2$ slope	19	17 548
Peak heart rate	11	12 504
HRR	9	3433
$\dot{V}O_2$ at the GET	8	2850
Peak SBP	5	10 442
Peak power output	4	954
Peak O_2 pulse	3	421
Chronotropic index	2	867
Heart rate recovery	2	771
NYHA	2	1159
OUES	2	92
Change in peak $\dot{V}O_2$ over time	2	201
EOV	1	253
Exercise-induced arrhythmia and ischaemia	1	138
Peak MET	1	51
Peak PET CO_2	1	44
Change in CPET variables over time	1	130

See [Supplementary material online](#) for individual study data including names, effects, and units (i.e. peak $\dot{V}O_2$ was reported in $mL \cdot kg^{-1} \cdot min^{-1}$, %predicted, and dichotomous cut-offs).

EOV, exercise oscillatory volume; HRR, heart rate reserve; MET, metabolic equivalent task; NYHA, New York Heart Association; O_2 , oxygen; OUES, oxygen uptake efficiency slope; Peak HR, peak heart rate; Peak $\dot{V}O_2$, peak oxygen consumption; PET CO_2 , partial pressure of end tidal carbon dioxide; SBP, systolic blood pressure; $\dot{V}_E/\dot{V}CO_2$ slope, ventilatory equivalent for carbon dioxide; $\dot{V}O_2$ at the GET, oxygen consumption at the gas exchange threshold.

to adjust for the same covariates and/or use the same analysis methods: for example, Ohuchi³⁹ and Egbe²⁴ both report peak $\dot{V}O_2$ on the same scale (per 5% predicted) in people with Fontan circulations. However, Ohuchi³⁹ controls for three covariates (age, brain natriuretic peptides, renin activity) and Egbe²⁴ four covariates, three of which are different (age, atriopulmonary Fontan, atrial arrhythmia, New York Heart Association).

Outcome

All studies pooled into meta-analysis had either a composite MACE outcome, or an outcome that is considered a MACE component (i.e. all-cause mortality, death or cardiac transplantation, unscheduled hospitalization for a cardiac cause, etc.). The median length of follow-up was 47 months (range 20–163 months).

Risk of bias

Risk of Bias judgements can be located in-text, in [Figure 2](#) and in the [Supplementary material online](#). For all studies, the overall RoB was low in 12 studies (25%), moderate in 31 (65%), and high in 5 (10%) studies. Of the 34 studies included in the meta-analysis, 10 (29%), 23 (68%), and 1 (2%) were considered low, medium, and high RoB, respectively ([Figure 2](#)). For studies to be considered as a low risk of bias they must have received a low grading in five out of the six QUIPS domains and reported: a

detailed description of their cohort, prospective studies with registered protocols, no evidence of selection bias, low levels of study attrition, well-described CPET protocols, followed up patients in multiple ways (i.e. office for national statistics, hospital records and contacted patients), report/adjusted for comparator prognostic factors and had appropriate statistical analyses.

Primary univariate analysis

The primary analysis ([Figure 3](#)) pooled univariate HR associations, from two or more studies, that reported the same ConHD diagnosis and CPET parameter combination. Data that were calculated from dichotomous CPET data were analysed separately.

The primary analysis contained 21 ConHD/CPET combinations, 10 were statistically significant with HR ranging from 0.70 to 0.98 ([Figure 3](#)). Peak $\dot{V}O_2$ was inversely associated with MACE in all ConHD subtypes, with an 18% reduction in Fontan circulation (95% CI 0.76–0.89; 10 studies), a 12% reduction in a mixed ConHD cohort (95% CI 0.83–0.93; 8 studies), a 16% reduction in transposition of the great arteries (TGAs) (systemic right ventricle, post-Senning/Mustard procedure) (95% CI 0.73–0.97; 5 studies), and a 6% reduction in ToF (0.89–0.99; 7 studies). To summarize results on other ConHD/CPET combinations in [Figure 3](#): HRR was inversely associated with MACE in three out of four ConHD groups (HR range 0.7–0.98), lower values of the $\dot{V}_E/\dot{V}CO_2$ slope were directly associated with a lower risk of MACE in two out of four ConHD groups (HR range 0.92–0.96), peak systolic blood pressure was associated to MACE in a mixed cohort (HR 0.98) but not TGA, but peak O_2 pulse, peak HR, and $\dot{V}O_2$ at the GET were not associated to MACE in any ConHD group.

The overall pooled HR was 0.93 (95% CI 0.91–0.94). Two sensitivity analyses were performed: the removal of paediatric data (HR 0.93, 95% CI 0.92–0.94)^{39,44} and the removal of studies reporting mixed exercise modalities in the patient cohort or did not explicitly report the exercise modality used (HR 0.91, 95% CI 0.89–0.93).^{22,25,29,45,51}

Secondary multivariate analysis

All studies that reported multivariate data from CPET parameters on a continuous scale were pooled into a secondary analysis to provide a head-to-head comparison ([Figure 4](#)). The primary univariate analysis included 80 ConHD/CPET combinations, the secondary analysis included 37, as fewer studies performed multivariate analysis ([Figure 4](#)). Where the number of studies is fewer on the multivariate analysis (right-hand plot), this is due to studies not reporting the final numeric HR statistics. Where the number of studies in the multivariate analysis is greater than the univariate analysis (left-hand plot, ToF peak $\dot{V}O_2$ and ToF $\dot{V}_E/\dot{V}CO_2$ slope) this is because two studies report multivariate data only.^{36,49}

To aid transparency, [Table 3](#) shows a summary of the multivariate data reported by the studies, it includes the univariate vs. multivariate HR (95% CI) covariates that studies considered for inclusion in multivariate models (i.e. ones that were significant at a univariate level), actual covariates in the final multivariate model, the analysis method undertaken, and the RoB of that study.

Table 3 Summary of studies that included multivariate data

Study	Outcome	ConHD and CRF factor	Unit	Univariate HR (95% CI)	Multivariate HR (95% CI)	Univariate P	Multivariate P	Method	Covariates considered for adjustment in the multivariate model	Final covariates included in the multivariate model	ROB
# Radojevic 2013	Death, non-elective hospitalization, and surgical repair	Ebstein HRR	Increase of $>25 \text{ b}\cdot\text{min}^{-1}$	3.07 (1.24–7.61)	NR	0.016	NS	Stepwise forward	Peak $\dot{V}O_2$	=	Moderate
# Radojevic 2013	Death, non-elective hospitalization, and surgical repair	Ebstein peak $\dot{V}O_2$	$<60\%$ predicted	3.47 (1.28–9.44)	NR	0.015	0.009	Stepwise forward	HRR	=	Moderate
Egbe 2017	5-year cardiovascular adverse event	Fontan change in peak $\dot{V}O_2$	-3 percentage points/year	3.41 (2.86–4.31)	1.86 (1.11–0.48)	0.003	0.02	Multivariate (all significant univariate included)	Atriopulmonary Fontan	=	Moderate
Cunningham 2017	Death, cardiac transplant, or non-elective hospitalization for heart failure	Fontan change in peak $\dot{V}O_2$	Per 10% decline	1.4 (1–1.8)	1.4 (1–1.9)	0.05	0.04	Bivariate	Change in NYHA FC	=	Moderate
# Nathan 2015	Death, transplantation, or non-elective cardiovascular hospitalization	Fontan EOv	Y/N	1.8 (1.1–3)	2 (1.2–3.6)	0.01	0.01	Multivariate	Age, NYHA, $V_{E/I}$, VCO_2 slope, % predicted FVC, Peak $\dot{V}O_2$, % predicted HR	=	Moderate
# Fernandes 2011	All-cause mortality	Fontan GET	$<9.0 \text{ mL}\cdot\text{kg}^{-1}\cdot\text{min}^{-1}$	5.5 (2.1–14.8)	NR	0.0006	0.02	Bivariate	Age at CPET	=	Moderate
Diller 2010	Death or heart transplantation	Fontan HRR	Per 10 $\text{b}\cdot\text{min}^{-1}$	0.83 (0.71–0.96)	0.97 (0.96–0.99)	0.016	0.01	Bivariate	Age	=	Moderate
# Fernandes 2011	All-cause mortality	Fontan O_2 pulse	<97 (% predicted)	2.7 (0.4–20.6)	NR	0.33	0.44	Bivariate	Age at CPET	=	Moderate
# Fernandes 2011	All-cause mortality	Fontan O_2 saturation at peak exercise	$<81.5\%$	3.3 (1–10.5)	NR	0.04	0.07	Bivariate	Age at CPET	=	Moderate
# Chen 2014	Cardiac morbidity (cardiac-related hospitalization—heart failure, arrhythmia, protein losing enteropathy)	Fontan OUES	$\leq 45\%$ predicted	7.64 (2.31–25.23)	5.25 (1.43–19.33)	0.001	0.013	Bivariate	Resting O_2 saturation	=	Moderate
# Fernandes 2011	All-cause mortality, new morbidity (unplanned CV hospitalization, heart	Fontan peak HR	$<122.5 \text{ b}\cdot\text{min}^{-1}$	10.6 (3–37.1)	NR	0.0002	0.001	Bivariate	Age at CPET	=	Moderate

Continued

Table 3 Continued

Study	Outcome	ConHD and CRF factor	Unit	Univariate HR (95% CI)	Multivariate HR (95% CI)	Univariate P	Multivariate P	Method	Covariates considered for adjustment in the multivariate model	Final covariates included in the multivariate model	ROB
Nathan 2015	failure, thrombosis, protein-losing enteropathy) Death, transplant, or incident non-elective hospitalization for cardiovascular or Fontan-related events	Fontan peak HR	Per 10%	NR	0.77 (0.62–0.95)	<0.05	0.01	Multivariate	Age, NYHA, V_E/V_{CO_2} slope, % predicted FVC, Peak $\dot{V}O_2$, % predicted HR	=	Moderate
Ohuchi 2014 (2)	Unscheduled hospitalization	Fontan peak HR	Per 10 b·min ⁻¹	0.73 (0.63–0.86)	NR	0.0002	NS	Multivariate (all significant univariate included)	Non-LV systemic ventricle, heterotaxy syndrome, protein PLE, CVP, arterial O ₂ saturation, V_E/V_{CO_2} , peak $\dot{V}O_2$, BNP, renin, Na, albumin, GGT, HOMA-IR	Heterotaxy, CVP, peak $\dot{V}O_2$, albumin, HOMA-IR	Moderate
Ohuchi 2014 (1)	Unscheduled hospitalization	Fontan peak HR	Per 10 b·min ⁻¹	0.78 (0.69–0.88)	NR	0.0001	NS	Multivariate (all significant univariate included)	Age, gender, age at Fontan, PLE, CVP, EDVI, AVVR grade, blood urea nitrogen, creatinine, V_E/V_{CO_2} , peak $\dot{V}O_2$, vital capacity, BNP, norepinephrine, renin, Na, albumin, HOMA-IR	Age, BNP, PRA	Moderate
# Fernandes 2011	All-cause mortality, new morbidity (unplanned CV hospitalization, heart failure, thrombosis, protein-losing enteropathy)	Fontan peak $\dot{V}O_2$	<18.9 mL·kg ⁻¹ ·min ⁻¹	2.38 (1.44–3.95)	1.95 (1.14–3.36)	0.001	0.02	Multivariate	Age at Fontan, Age at CPET, Time from Fontan to CPET, V_E/V_{CO_2} slope	=	Moderate
Ohuchi 2014 (2)	Unscheduled hospitalization	Fontan peak $\dot{V}O_2$	Per 5%	0.55 (0.44–0.7)	0.55 (0.31–0.88)	<0.0001	0.0109				Moderate

Continued

Table 3 Continued

Study	Outcome	ConHD and CRF factor	Unit	Univariate HR (95% CI)	Multivariate HR (95% CI)	Univariate P	Multivariate P	Method	Covariates considered for adjustment in the multivariate model	Final covariates included in the multivariate model	ROB
Ohuchi 2014 (1)	Unscheduled hospitalization	Fontan peak $\dot{V}O_2$	Per 5%	0.65 (0.55–0.76)	NR	<0.0001	NS	Multivariate (all significant univariate included)	Non-LV systemic ventricle, heterotaxy syndrome, protein PLE, CVP, arterial O_2 saturation, V_E/VCO_2 , peak HR, BNP, renin, Na, albumin, GGT, HOMA-IR	Heterotaxy, CVP, peak $\dot{V}O_2$, albumin, HOMA-IR	Moderate
Sieweke 2019	Death or heart failure event	Fontan peak $\dot{V}O_2$	% predicted	0.92 (0.87–0.98)	NR	0.012	NS	Multivariate (all significant univariate included)	Age, gender, age at Fontan, PLE, CVP, EDVI, AVVR grade, blood urea nitrogen, creatinine, V_E/VCO_2 , peak HR, vital capacity, BNP, norepinephrine, renin, Na, albumin, HOMA-IR	Age, BNP, PRA	Moderate
# Fernandes 2011	All-cause mortality	Fontan peak $\dot{V}O_2$	<16.6 mL·kg ⁻¹ ·min ⁻¹	7.5 (2.6–21.6)	NR	0.0002	0.005	Bivariate	EF, BNP, cardiac index, contractility, afterload	=	Moderate
Inai 2005	Arrhythmia, thromboembolism, heart-failure, sudden death, and protein-losing enterocolitis	Fontan peak $\dot{V}O_2$	NR	1.18 (NR)	1.21 (NR)	0.035	0.076	Multivariate	LVEF, ANP, BNP, NE, Ang-I, Ang-II, Plasma renin activity, Aldosterone, ET-1	=	Moderate
Nathan 2015	Death, transplant, or incident non-elective hospitalization for	Fontan peak $\dot{V}O_2$	Per 10%	NR	NR	<0.05	NS	Multivariate	Age, NYHA, V_E/VCO_2 slope, % predicted FVC,	=	Moderate

Continued

Table 3 Continued

Study	Outcome	ConHD and CRF factor	Unit	Univariate HR (95% CI)	Multivariate HR (95% CI)	Univariate P	Multivariate P	Method	Covariates considered for adjustment in the multivariate model	Final covariates included in the multivariate model	ROB
Egbe 2017	cardiovascular or Fontan-related events 5-year cardiovascular adverse event	Fontan peak $\dot{V}O_2$	Per 5%	2.16 (1.33–3.94)	1.77 (0.33–3.76)	0.02	0.47	Multivariate (all significant univariate included)	peak $\dot{V}O_2$, % predicted HR Age, atrio-pulmonary Fontan, atrial arrhythmia, NYHA	=	Moderate
# Fernandes 2011	All-cause mortality	Fontan V_E/VCO_2 slope	>35.5	2.84 (1.02–7.87)	NR	0.04	0.04	Bivariate	Age at CPET	=	Moderate
Chen 2014	Cardiac morbidity (cardiac-related hospitalization—heart failure, arrhythmia, protein losing enteropathy)	Fontan V_E/VCO_2 slope	≥37	10.77 (1.37–84.25)	3.42 (0.31–37.7)	0.023	0.316	Bivariate	Heart failure and/or PLE	=	Moderate
Ohuchi 2014 (2)	Unscheduled hospitalization	Fontan V_E/VCO_2 slope	Per 1	1.14 (1.06–1.21)	NR	0.0002	NS	Multivariate (all significant univariate included)	Non-LV systemic ventricle, heterotaxy syndrome, protein PLE, CVP, arterial O_2 saturation, peak $\dot{V}O_2$, peak HR, BNP, renin, Na, albumin, GGT, HOMA-IR	Heterotaxy, CVP, peak $\dot{V}O_2$, albumin, HOMA-IR	Moderate
Ohuchi 2014 (1)	Unscheduled hospitalization	Fontan V_E/VCO_2 slope	Per 1	1.08 (1.04–1.12)	NR	0.0001	NS	Multivariate (all significant univariate included)	Age, gender, age at Fontan, PLE, CVP, EDVI, AVVR grade, blood urea nitrogen, Creatinine, peak HR, peak $\dot{V}O_2$, vital capacity, BNP, norepinephrine, renin, Na,	Age, BNP, PRA	Moderate

Continued

Table 3 Continued

Study	Outcome	ConHD and CRF factor	Unit	Univariate HR (95% CI)	Multivariate HR (95% CI)	Univariate P	Multivariate P	Method	Covariates considered for adjustment in the multivariate model	Final covariates included in the multivariate model	ROB
Inuzuka 2012	All-cause mortality	Mix fall in O ₂ saturation during exercise	Per 5% decrease	2.9 (2.01–4.18)	NR	0.001	NS	Multivariate stepwise forward	albumin, HOMA-IR, Peak RER, peak VO ₂ , HRR, GET, V _E /VCO ₂ slope, age, resting O ₂ saturation	=	Moderate
Inuzuka 2012	All-cause mortality	Mix GET	NR	0.86 (0.83–0.9)	NR	0.001	NS	Multivariate stepwise forward	HRR, O ₂ saturations during exercise, V _E /VCO ₂ slope, age, resting O ₂ saturation	=	Moderate
Diller 2006	All-cause mortality	Mix HRR	Per 10 b·min ⁻¹	0.75 (0.67–0.84)	0.86 (0.74–0.99)	0.0001	0.04	Multivariate stepwise forward	Antiarrhythmic therapy, NYHA, peak VO ₂	=	Moderate
Inuzuka 2012	All-cause mortality	Mix HRR	Per 10 b·min ⁻¹	0.75 (0.69–0.82)	0.85 (0.77–0.94)	0.001	0.001	Multivariate stepwise forward	Peak RER, GET, peak VO ₂ , V _E /VCO ₂ slope, O ₂ saturations during exercise, age, resting O ₂ saturation	=	Moderate
Giardini 2007	All-cause mortality	Mix HRR	HRR	0.83 (0.74–0.9)	NR	0.0001	NS	Multivariate (backward method)	Peak VO ₂ , V _E /VCO ₂ slope, peak circulatory power, latory power, NYHA, antiarrhythmic therapy	=	Moderate
Diller 2019	All-cause mortality	Mix peak HR	b·min ⁻¹	0.97 (0.96–0.97)	0.99 (0.98–0.99)	<0.001	0.009	Multivariate	Age, gender, ECG parameters, laboratory parameters, peak VO ₂ , peak SBP	=	Low
Dimopoulos 2006	Mortality	Mix peak HR	b·min ⁻¹	0.98 (0.96–0.99)	NR	<0.05	NS	Multivariate stepwise forward	VEVCO ₂ slope, Peak HR	=	Moderate

Continued

Table 3 Continued

Study	Outcome	ConHD and CRF factor	Unit	Univariate HR (95% CI)	Multivariate HR (95% CI)	Univariate P	Multivariate P	Method	Covariates considered for adjustment in the multivariate model	Final covariates included in the multivariate model	ROB
Diller 2019	All-cause mortality	Mix peak SBP	mmHg	0.98 (0.97–0.99)	0.98 (0.97–0.99)	<0.001	0.001	Multivariate	Age, gender, ECG parameters, peak HR, peak VO ₂ , laboratory parameters	=	Low
Giardini 2007	All-cause mortality	Mix peak VO ₂	mL·kg ⁻¹ ·min ⁻¹	0.91 (0.84–0.93)	NR	0.0001	NS	Multivariate (backward method)	HRR, V _E /VCO ₂ slope, peak circulatory power, NYHA, antiarrhythmic therapy	V _E /VCO ₂ slope, peak circulatory power	Moderate
Inuzuka 2012	All-cause mortality	Mix peak VO ₂	Per 10%	0.67 (0.61–0.73)	0.78 (0.69–0.9)	0.001	0.001	Multivariate stepwise forward	Peak RER, GET, HRR, V _E /VCO ₂ slope, O ₂ saturations during exercise, age, resting O ₂ saturation	=	Moderate
Brida 2017	All-cause mortality	Mix peak VO ₂	100 mL/min	0.85 (0.83–0.88)	0.90 (0.87–0.94)	<0.0001	0.0001	Multivariate	Age, complexity moderate, complexity severe, cyanosis, NYHA class 2, NYHA class 3, NYHA class 4, Body mass index	=	Low
Diller 2006	All-cause mortality	Mix peak VO ₂	mL·kg ⁻¹ ·min ⁻¹	0.9 (0.86–0.94)	NR	0.0001	NS	Multivariate stepwise forward	HRR, antiarrhythmic therapy, NYHA	=	Moderate
Diller 2019	All-cause mortality	Mix peak VO ₂	mL·kg ⁻¹ ·min ⁻¹	0.88 (0.85–0.90)	0.91 (0.88–0.95)	<0.001	0.001	Multivariate	Age, gender, ECG parameters, peak HR, laboratory parameters, peak SBP	=	Low
Dimopoulos 2006	Mortality	Mix peak VO ₂	mL·kg ⁻¹ ·min ⁻¹	0.9 (0.83–0.96)	NR	<0.05	NS	Multivariate stepwise forward	V _E /VCO ₂ slope, Peak HR	=	Moderate
Giardini 2007	All-cause mortality	All-cause mortality		0.76 (0.67–0.84)	0.96 (0.94–0.97)	0.0001	0.0001				Moderate

Continued

Table 3 Continued

Study	Outcome	ConHD and CRF factor	Unit	Univariate HR (95% CI)	Multivariate HR (95% CI)	Univariate P	Multivariate P	Method	Covariates considered for adjustment in the multivariate model	Final covariates included in the multivariate model	ROB
		Mix peak circulatory power	mmHg mL O ₂ min ⁻¹ kg ⁻²					Multivariate (backward method)	HRR, V _E /VCO ₂ slope, peak VO ₂ , NYHA, antiarrhythmic therapy	V _E /VCO ₂ slope, peak circulatory power	
Inuzuka 2012	All-cause mortality	Mix rest O ₂ saturation	Per 1%	0.91 (0.89–0.93)	0.96 (0.93–0.99)	0.001	0.009	Multivariate stepwise forward	Peak RER, GET, peak VO ₂ , V _E /VCO ₂ slope, HRR, age, O ₂ saturations during exercise	=	Moderate
Dimopoulos 2006	All-cause mortality	Mix V _E /VCO ₂ slope	Per 1	1.07 (1.03–1.11)	1.076 (1.04–1.12)	<0.05	<0.05	Multivariate stepwise forward	Peak VO ₂ , peak HR	=	Moderate
Giardini 2007	All-cause mortality	Mix V _E /VCO ₂ slope	NR	1.12 (1.08–1.18)	1.17 (1.1–1.24)	0.0001	0.0001	Multivariate (backward method)	HRR, peak circulatory power, peak VO ₂ , NYHA, antiarrhythmic therapy	V _E /VCO ₂ slope, peak circulatory power	Moderate
Inuzuka 2012	All-cause mortality	Mix V _E /VCO ₂ slope	V _E /VCO ₂ slope	1.02 (1.02–1.03)	NR	0.001	NS	Multivariate stepwise forward	Peak RER, GET, peak VO ₂ , HRR, O ₂ saturations during exercise, age, resting O ₂ saturation	=	Moderate
Rydman 2015	New sustained tachyarrhythmia or heart failure hospital admission/transplantation/death	TGA HRR	b·min ⁻¹	0.98 (0.96–0.99)	0.99 (0.97–1.01)	0.037	0.419	Bivariate	RV late gadolinium enhancement present	=	Moderate
Giardini 2009	All-cause mortality and emergency cardiac-related hospital admission	TGA HRR	NR	0.034 (0.01–0.14)	NR	0.0001	NS	Multivariate	Peak VO ₂ , pacemaker, age at CPET, V _E /VCO ₂ slope, Senning operation	V _E /VCO ₂ slope, Peak Low VO ₂ .	Peak Low
Van Der Bom 2013	Death; ventricular tachycardia; vascular events; tricuspid regurgitation requiring invasive treatment; worsening heart failure; supraventricular	TGA peak SBP	mmHg	0.78 (NR)	0.86 (NR)	0.002	0.02	Other multivariate	NYHA, ECG (sinus rhythm), Holter (premature ventricular complex), RVEDVi via MRI	RVEDVi (MRI), RVEDVi (Echo)	Low

Continued

Table 3 Continued

Study	Outcome	ConHD and CRF factor	Unit	Univariate HR (95% CI)	Multivariate HR (95% CI)	Univariate P	Multivariate P	Method	Covariates considered for adjustment in the multivariate model	Final covariates included in the multivariate model	ROB
									and echocardiography		
Giardini 2009	bradyarrhythmia or tachyarrhythmia requiring cardioversion, ablation, pacemaker, or a permanent change of medication	TGA peak VO ₂	% predicted	0.96 (0.95–0.97)	0.98 (0.96–0.99)	0.0001	0.0136	Multivariate	V _E /VCO ₂ slope, pacemaker, age at CPET, HRR, Senning operation	V _E /VCO ₂ slope, Peak Low VO ₂	Peak Low
Rydman 2015	All-cause mortality and emergency cardiac-related hospital admission	TGA peak VO ₂	Per 5 mL·kg ⁻¹ ·min ⁻¹	0.56 (0.35–0.89)	0.59 (0.35–1.01)	0.016	0.057	Bivariate	RV late gadolinium enhancement present	=	Moderate
Giardini 2009	New sustained tachyarrhythmia or heart failure hospital admission/transplantation/death	TGA V _E /VCO ₂ slope	V _E /VCO ₂ slope	1.09 (1.07–1.10)	1.08 (1.06–1.11)	0.0001	0.0001	Multivariate	Peak VO ₂ , pacemaker, age at CPET, HRR, Senning operation	V _E /VCO ₂ slope, Peak Low VO ₂	Peak Low
Tsai 2016	All-cause mortality and emergency cardiac-related hospital admission	ToF GET	mL·kg ⁻¹ ·min ⁻¹	0.18 (NR)	NR	0.023	NS	Multivariate	Peak VO ₂ , moderate/severe PR, OUES/BSA	=	Moderate
Valente 2014	Two-year cardiac-related hospitalization	ToF GET	Per 5 % predicted decrease	1.37 (0.81–2.31)	NR	0.25	NS	Multivariate stepwise forward	Age at repair, age at CMR, TOF with PA, prior systemic-pulmonary artery shunt, RV-to-PA conduit, atrial arrhythmia, QRS duration, % predicted peak watts, peak VO ₂ , RV EF, RV mass index (g/m ²), RV mass (z score), RV mass/volume, LVESV, LV EF, LV mass	RV mass/volume ratio, LV EF/RV EF, atrial arrhythmia	Low

Continued

Table 3 Continued

Study	Outcome	ConHD and CRF factor	Unit	Univariate HR (95% CI)	Multivariate HR (95% CI)	Univariate P	Multivariate P	Method	Covariates considered for adjustment in the multivariate model	Final covariates included in the multivariate model	ROB
# Tsai 2016	Two-year cardiac-related hospitalization	ToF OUES	<1.029 (OUES/BSA)	4.14 (NR)	4.60 (NR)	0.013	0.031	Multivariate	Peak VO ₂ , moderate/severe PR, GET	=	Moderate
Giardini 2007b	Cardiac-related mortality and hospitalization	ToF peak HR	b·min ⁻¹	0.98 (0.96–0.99)	1.07 (NR)	0.001	NS	Multivariate stepwise forward	RV systolic function, pulmonary regurgitation, RV systolic pressure, NYHA, peak VO ₂ , V _E /VCO ₂ slope	NYHA, V _E /VCO ₂ slope, peak VO ₂	Low
Giardini 2007b	Cardiac-related mortality and hospitalization	ToF peak VO ₂	% predicted	0.96 (0.93–0.99)	0.97 (0.95–0.99)	0.001	0.01	Multivariate stepwise forward	RV systolic function, pulmonary regurgitation, RV systolic pressure, NYHA, V _E /VCO ₂ slope	NYHA, V _E /VCO ₂ slope	Low
Muller 2015	Death or cardiac-related hospitalization	ToF peak VO ₂	% predicted	NR	0.98 (0.97–0.99)	NR	0.001	Multivariate	Peak HR, NYHA, V _E /VCO ₂ slope	=	Low
# Tsai 2016	Two-year cardiac-related hospitalization	ToF peak VO ₂	<74%	9.93 (NR)	20.07 (NR)	0.026	0.011	Multivariate	QRS duration, OUES/BSA, moderate/severe pulmonary regurgitation, GET	=	Moderate
Buyts 2012	Death or cardiac-related hospitalization	ToF peak VO ₂	mL·kg ⁻¹ ·min ⁻¹	NR	0.96 (0.92–0.99)	NR	0.029	Multivariate	Age at correction, age at CPET, RV function, QRS duration, V _E /VCO ₂ slope	=	Low
Valente 2014	All-cause mortality, aborted sudden cardiac death, or sustained VT	ToF peak VO ₂	Per 5% predicted decrease	1.2 (1.01–1.43)	NR	0.03	NS	Multivariate stepwise forward	Age at repair, age at cardiac MR, TOF with PA, prior systemic-pulmonary artery shunt, RV-to-PA conduit, RV mass/volume ratio, LV EF/RV EF, atrial arrhythmia	RV mass/volume ratio, LV EF/RV EF, atrial arrhythmia	Low

Continued

Table 3 Continued

Study	Outcome	ConHD and CRF factor	Unit	Univariate HR (95% CI)	Multivariate HR (95% CI)	Univariate P	Multivariate P	Method	Covariates considered for adjustment in the multivariate model	Final covariates included in the multivariate model	ROB
Valente 2014	All-cause mortality, aborted sudden cardiac death, or sustained VT	ToF peak watts	Per 5-unit decrease	1.28 (1.05–1.56)	NR	0.02	NS	Multivariate stepwise forward	Age at repair, age at cardiac magnetic resonance imaging, ToF with PA, prior systemic-pulmonary artery shunt, RV-to-PA conduit, atrial arrhythmia, QRS duration, VO ₂ at the GET, peak VO ₂ , RV EF, RV mass index (g/m ²), RV mass (z score), RV mass/volume, LVESV, LV EF, LV mass index (g/m ²), LV mass/volume	RV mass/volume ratio, LV EF/RV EF, atrial arrhythmia	Low
Buys 2012	Death or cardiac-related hospitalization	ToF V _E /VCO ₂ slope	V _E /VCO ₂ slope	NR	1.13 (1.02–1.26)	NR	0.021	Multivariate	Age at correction, age at CPET, RV function, QRS	=	Low

Continued

Table 3 Continued

Study	Outcome	ConHD and CRF factor	Unit	Univariate HR (95% CI)	Multivariate HR (95% CI)	Univariate P	Multivariate P	Method	Covariates considered for adjustment in the multivariate model	Final covariates included in the multivariate model	ROB
Muller 2015	Death or cardiac-related hospitalization	ToF V_E/V_{CO_2} slope	V_E/V_{CO_2} slope	NR	1.03 (1.02–1.05)	NR	0.001	Multivariate	duration, Peak VO_2 Peak VO_2 , age, QRS duration	=	Low
Giardini 2007b	Cardiac-related mortality and hospitalization	ToF V_E/V_{CO_2} slope	V_E/V_{CO_2} slope	1.09 (1.05–1.15)	1.08 (1.04–1.11)	0.001	0.002	Multivariate stepwise forward	RV systolic function, pulmonary regurgitation, RV systolic pressure, Peak HR, NYHA, Peak VO_2	NYHA, Peak VO_2	Low

indicates studies that were not pooled into the secondary analysis as they calculated IHR from dichotomous patient data; grey areas indicate non-significant associations in the final model ($P > 0.05$); Ohuchi 2014 (1), adults; Ohuchi 2014 (2), paediatrics; Giardini 2007b, Tetralogy of Fallot patients.

BNP, brain natriuretic peptide; BSA, body surface area; CVP, central venous pressure; EDVI, end-diastolic volume indexed; EF, ejection fraction; EOY, exercise oscillatory volume; ESV, end-systolic volume; FVC, forced vital capacity; GGT, gamma-glutamyl transferase; HOMA-IR, homeostatic model assessment-insulin resistance; HRR, heart rate reserve; LV, left ventricle; MET, metabolic equivalent task; Mix, mixture of ConHD populations; NR, not reported; NS, non-significant association but numerical value not reported; NYHA, New York Heart Association; O_2 , oxygen; OUES, oxygen uptake efficiency slope; Peak HR, peak heart rate; Peak $\dot{V}O_2$, peak oxygen consumption; PET $\dot{V}CO_2$, partial pressure of end tidal carbon dioxide; PLE, protein losing enteropathy; RER, respiratory exchange ratio; RV, right ventricle; SBP, systolic blood pressure; TGA, transposition of the great arteries (systemic right ventricle); ToF, Tetralogy of Fallot; VC, vital capacity; V_E/V_{CO_2} slope, ventilatory equivalent for carbon dioxide; VO_2 at the GET, oxygen consumption at the gas exchange threshold.

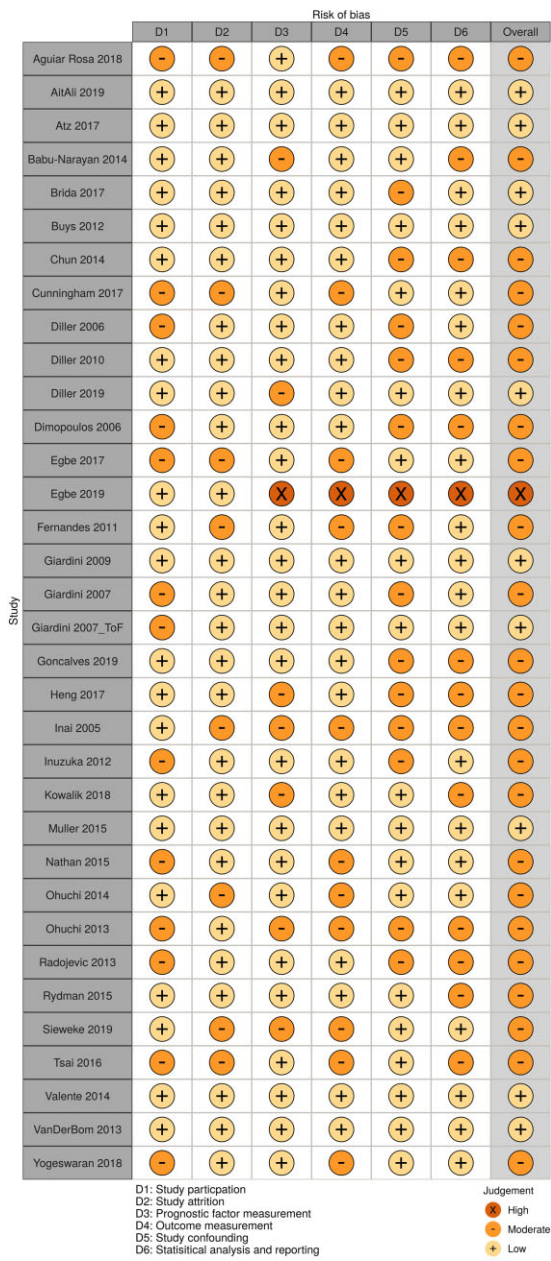


Figure 2 Risk of bias of studies included within a meta-analysis.

Table 3 presents 63 significant univariate associations, once these index CPET parameters had been included in multivariate analyses, 35 (55%) associations remained significant predictors of MACE.

Adverse events during cardiopulmonary exercise testing

Forty-four (92%) studies did not explicitly report the secondary outcome of serious adverse events during CPET. Of the four (8%) studies that did contribute data, no study reported a serious adverse event or death. However, Buyts *et al.*⁴⁹ did report ST-segment depression at peak exercise in one participant with repaired ToF.

Discussion

The current review included 48 studies (34 meta-analysed) assessing the associations between CPET-derived CRF outcomes and MACE in patients with ConHD. These findings support the hypothesis that CRF is a prognostic factor for mortality and morbidity in ConHD. The primary univariate meta-analysis reports that higher values of several CRF parameters (e.g., peak $\dot{V}O_2$, and HRR) and lower values of the $\dot{V}_E/\dot{V}CO_2$ slope were consistently associated with reduced risk of MACE. Although the strength of this association was reduced following adjustment (e.g. age, gender), pooled models of multivariate estimates remained statistically significant. Of the four studies that explicitly reported serious adverse event data during a CPET, no events were reported.

The most reported CPET variable was peak $\dot{V}O_2$ (32 studies), the most common unit of measure was $mL \cdot kg^{-1} \cdot min^{-1}$ followed by percent-predicted. Although less commonly reported, higher levels of submaximal outcomes were also associated to a reduced risk of MACE, showing a wide range of CPET-derived parameters may have prognostic utility in ConHD. These findings support the European Society of Cardiology and American College of Cardiology recommendations on the use of CPET in routine care for ConHD patients.^{3,68}

Agreements and disagreements with other studies or reviews

This is the first systematic review and meta-analysis on the prognostic associations between CRF in MACE in all types of ConHD. Udholm *et al.*⁹ reported that the decline in peak $\dot{V}O_2$ over time and the presence of EOv were the strongest predictors of outcome, but only in Fontan patients. The current review supports this conclusion, but also reports that a peak $\dot{V}O_2$ collected during routine care is independently prognostic of outcomes in Fontan patients.

Randomized controlled trials (RCTs) using exercise training have a likely beneficial effect increasing both peak and submaximal indices of CRF in people with ConHD. Peak $\dot{V}O_2$ has been reported to increase by a mean difference (MD) of 2.74 $mL \cdot kg^{-1} \cdot min^{-1}$ (95% CI 0.36–5.12) and $\dot{V}O_2$ at the GET by a MD of 2.05 (95% CI 0.05–4.05).^{11,69} Further RCTs should utilize a long-term follow-up to see if these increases in measures of CRF are sustained and prognostically important.

Study considerations

There can be considerable clinical diversity between ConHD conditions (i.e. lesion-specific diagnoses) and within a single ConHD subtype.^{6,70} This review has performed subgroup analysis to help explain the between condition heterogeneity. The authors would recommend not to interpret the overall pooled estimate from the meta-analysis due to the between ConHD/CPET group heterogeneity, but instead to interpret the subgroup values (i.e. HR and 95% CI for peak $\dot{V}O_2$ in Fontan). Unfortunately, due to the variability in reporting, it is not possible to control for the within condition variability. To help reduce the within condition heterogeneity, future studies could consider a functional classification alongside a lesion-specific classification^{71,72} or to address this research question further perform an individual patient data meta-analysis.⁷³

Another potential bias is the composite outcome MACE, as certain CPET parameters may predict one element of the composite

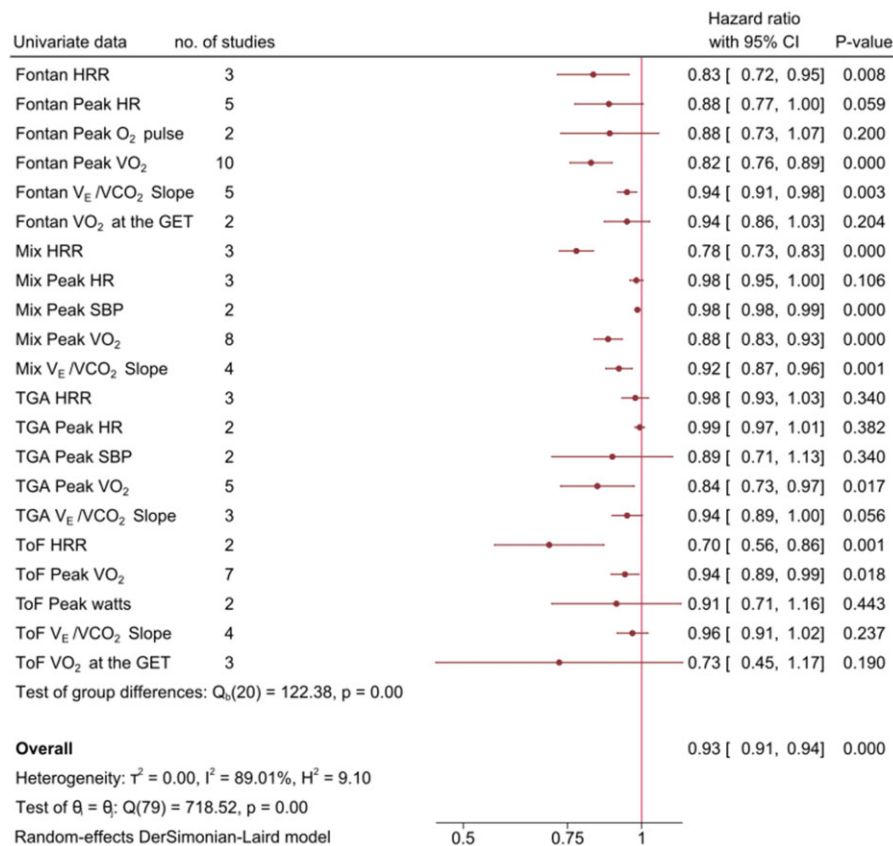


Figure 3 Primary meta-analysis of univariate HR associations between ConHD/CPET parameters and MACE. GET, gas exchange threshold; HRR, heart rate reserve; Mix, mixture of ConHD populations; O₂, oxygen; Peak HR, peak heart rate; SBP, systolic blood pressure; TGA, transposition of the great arteries; ToF, Tetralogy of Fallot; V_E/VCO₂ slope, ventilatory equivalent for carbon dioxide.

outcome but not others. However, using MACE allowed the current review to pool multiple patient-important outcomes.

Most studies (65%) were judged as a moderate risk of bias. Future studies are encouraged to prospectively register their protocol. Moreover, studies should aim to improve their description of the patient cohort, study attrition, CPET interpretation, and patient follow-up. The funnel plots show asymmetry, which could indicate small study effects/reporting bias. However, it is too challenging to disentangle potential publication bias from the substantial heterogeneity present, which is a known issue with prognostic factors research.¹⁰

Conclusion

Cardiorespiratory fitness measured by CPET appears to be associated with future MACE in people with ConHD. However, given the moderate quality of included studies there is currently insufficient evidence to definitively determine the prognostic influence of CRF. Although data are limited (four studies), CPET appears safe with no study reporting a serious adverse event. No CPET protocol directly measured myocardial function during exercise, which may hold further prognostic benefit, and only 1% of the population

was paediatric (age < 18 years). Further prospective prognostic cohort studies and RCTs utilizing exercise training with long durations of follow-up are warranted.

Implications for research and practice

We propose several suggestions to improve reporting. Firstly, at a minimum all studies should explicitly report any adverse events that occurred during CPET and follow the prognostic factor and prognostic modelling reporting frameworks (REMARK and TRIPOD).^{74,75} Furthermore, future research should aim to prospectively register their trials with transparent prognostic factors of interest. Studies should report the HR (or equivalent summary statistic) of all scales of the prognostic factor (i.e. % predicted, mL·kg⁻¹·min⁻¹) and avoid using summary statistics computed from dichotomous CPET data unless to answer a specific research question. To estimate the independent effect of CRF, studies should control for common covariates such as age at the test and resting oxygen saturations as a minimum. Lastly, there was an over reliance on secondary criteria (i.e. RER) to validate peak efforts, which likely confounds peak CPET results.⁷⁶ Instead, if clinically appropriate and feasible, studies should confirm a plateau in oxygen consumption.

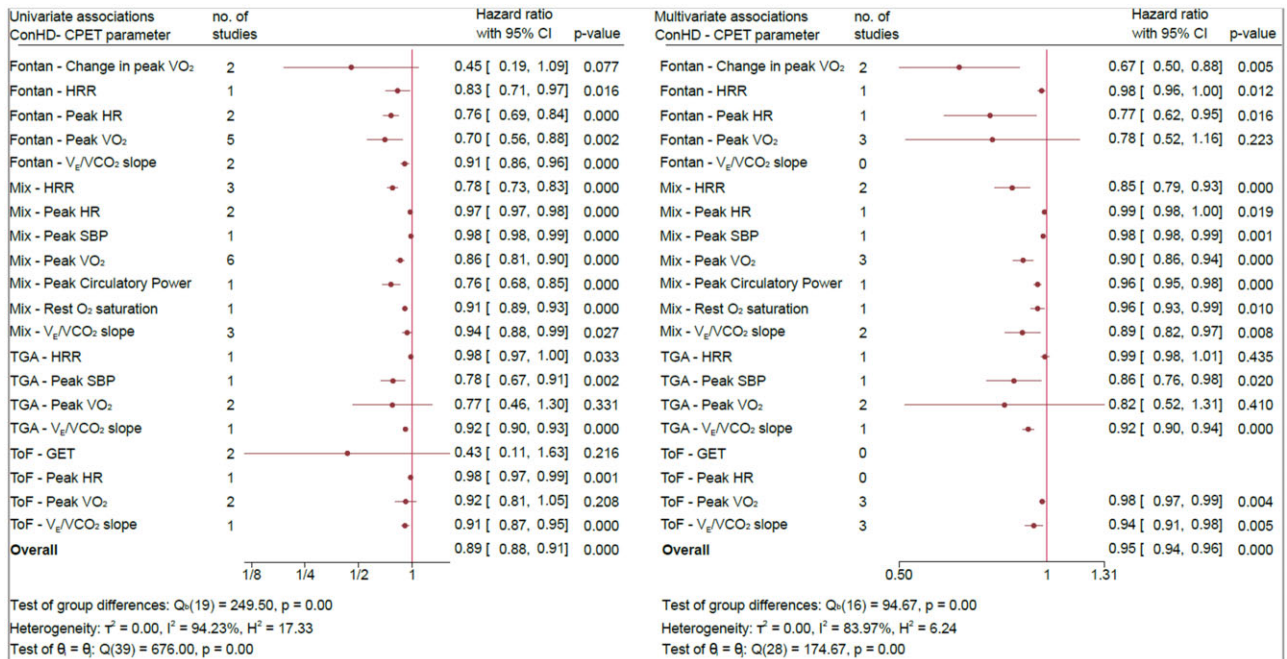


Figure 4 Secondary analysis: side by side comparison of univariate HR vs. multivariate HR. GET, gas exchange threshold; HRR, heart rate reserve; Mix, mixture of ConHD populations; O₂, oxygen; Peak HR, peak heart rate; SBP, systolic blood pressure; TGA, transposition of the great arteries; ToF, Tetralogy of Fallot; V_E/VCO₂ slope, ventilatory equivalent for carbon dioxide.

Differences between protocol and main review

- Due to the lack of standardized reporting (i.e. units of measure, different covariates) and clinical heterogeneity meta-regression and Grading of Recommendations Assessment, Development and Evaluation was not attempted.
- Second subgroup analysis of units of measure (i.e. %predicted vs. absolute).
- Only the composite outcome of major adverse cardiovascular events was analysed.
- The authors were not contacted to provide missing data.

Supplementary material

Supplementary material is available at *European Journal of Preventive Cardiology* online.

Data availability statement

Data will be shared on reasonable scientific request.

Funding

C.A.W. is funded by an industrial PhD scholarship by Canon Medical Systems UK Ltd. and the University of Exeter. M.E.W. is funded by a PhD scholarship from the QUEx institute. D.M.D. is supported by a doctoral scholarship (MR/N0137941/1) for the GW4 BIOMED DTP, awarded to the Universities of Bath, Bristol, Cardiff, and Exeter from the Medical

Research Council (MRC)/UKRI. The funding bodies had no influence over the design or production of this manuscript.

Conflict of interest: none declared.

References

1. Mezzani A, Agostoni P, Cohen-Solal A, Corrà U, Jegier A, Kouidi E, Mazic S, Meurin P, Piepoli M, Simon A, Laethem CV, Vanhees L. Standards for the use of cardiopulmonary exercise testing for the functional evaluation of cardiac patients: a report from the Exercise Physiology Section of the European Association for Cardiovascular Prevention and Rehabilitation. *Eur J Prev Cardiol* 2009;**16**:249–267.
2. Hossri CA, Isabela P, Souza A, de Oliveira JS, Mastrocola L. Assessment of oxygen-uptake efficiency slope in healthy children and children with heart disease: generation of appropriate reference values for the OUES variable. *Eur J Prev Cardiol* 2019;**26**:177–184.
3. Baumgartner H, De Backer J, Babu-Narayan SV, Budts W, Chessa M, Diller G-P, Lung B, Kluin J, Lang IM, Meijboom F, Moons P, Mulder BJM, Oechslin E, Roos-Hesselink JW, Schwerzmann M, Sondergaard L, Zeppenfeld K; ESC Scientific Document Group. 2020 ESC Guidelines for the management of adult congenital heart disease. *Eur Heart J* 2021;**42**:563–646.
4. Mitchell SC, Korones SB, Berendes HW. Congenital heart disease in 56,109 births. Incidence and natural history. *Circulation* 1971;**43**:323–332.
5. Liu Y, Chen S, Zühlke L, Black GC, Choy M-K, Li N, Keavney BD. Global birth prevalence of congenital heart defects 1970–2017: updated systematic review and meta-analysis of 260 studies. *Int J Epidemiol* 2019;**48**:455–463.
6. Amedro P, Gavotto A, Guillaumont S, Bertet H, Vincenti M, De La Villeon G, Bredy C, Acar P, Ovaert C, Picot M-C, Matecki S. Cardiopulmonary fitness in children with congenital heart diseases versus healthy children. *Heart* 2018;**104**:1026–1036.
7. Gavotto A, Vandenbergh D, Abassi H, Huguët H, Macione V, Picot M-C, Guillaumont S, Matecki S, Amedro P. Oxygen uptake efficiency slope: a reliable surrogate parameter for exercise capacity in healthy and cardiac children? *Arch Dis Child* 2020;**105**:1167–1174.

8. Gavotto A, Huguet H, Picot M, Guillaumont S, Matecki S, Amedro P. The VE/VCO₂ slope: a useful tool to evaluate the physiological status of children with congenital heart disease. *J Appl Physiol* 2020;**129**:1102–1110.
9. Udholm S, Aldweib N, Hjordtal VE, Veldtman GR. Prognostic power of cardiopulmonary exercise testing in Fontan patients: a systematic review. *Open Hear* 2018;**5**:e000812.
10. Riley RD, Moons KGM, Snell KIE, Ensor J, Hooft L, Altman DG, Hayden J, Collins GS, Debray TPA. A guide to systematic review and meta-analysis of prognostic factor studies. *BMJ* 2019;**364**:k4597.
11. Williams CA, Wadey C, Pielles G, Stuart G, Taylor RS, Long L. Physical activity interventions for people with congenital heart disease. *Cochrane Database Syst Rev* 2020;**10**:CD013400.
12. Debray TP, Damen JA, Riley RD, Snell K, Reitsma JB, Hooft L, Collins GS, Moons KG. A framework for meta-analysis of prediction model studies with binary and time-to-event outcomes. *Stat Methods Med Res* 2019;**28**:2768–2786.
13. Wadey CA, Weston ME, Dorobantu DM, Taylor RS, Pielles GE, Barker AR, Williams CA. The role of cardiopulmonary exercise testing (CPET) in predicting mortality and morbidity in people with congenital heart disease: a systematic review and meta-analysis (Protocol). *J Congenit Cardiol* 2020;**4**:1–6.
14. Liberati A, Altman DG, Tetzlaff J, Mulrow C, Gøtzsche PC, Ioannidis JPA, Clarke M, Devereaux PJ, Kleijnen J, Moher D. The PRISMA statement for reporting systematic reviews and meta-analyses of studies that evaluate healthcare interventions: explanation and elaboration. *BMJ* 2009;**339**:b2700.
15. Rethlefsen ML, Kirtley S, Waffenschmidt S, Ayala AP, Moher D, Page MJ, Koffel JB; PRISMA-S Group. PRISMA-S: an extension to the PRISMA statement for reporting literature searches in systematic reviews. *Syst Rev* 2021;**10**:1–19.
16. Moons KGM, de Groot JAH, Bouwmeester W, Vergouwe Y, Mallett S, Altman DG, Reitsma JB, Collins GS. Critical appraisal and data extraction for systematic reviews of prediction modelling studies: the CHARMS checklist. *PLoS Med* 2014;**11**:e1001744.
17. Altman DG, Bland JM. How to obtain the confidence interval from a P value. *BMJ* 2011;**343**:d2090.
18. Hayden JA, van der Windt DA, Cartwright JL, Côté P, Bombardier C. Assessing bias in studies of prognostic factors. *Ann Intern Med* 2013;**158**:280–286.
19. Campbell M, McKenzie JE, Sowden A, Katikireddi SV, Brennan SE, Ellis S, Hartmann-Boyce J, Ryan R, Shepperd S, Thomas J, Welch V. Synthesis without meta-analysis (SWiM) in systematic reviews: Reporting guideline. *BMJ* 2020;**368**:1–6.
20. Aguiar Rosa S, Agapito A, Soares RM, Sousa L, Oliveira JA, Abreu A, Silva AS, Alves S, Aidos H, Pinto FF, Ferreira RC. Congenital heart disease in adults: assessment of functional capacity using cardiopulmonary exercise testing. *Rev Port Cardiol* 2018;**37**:399–405.
21. Ait Ali L, Lurz P, Ripoli A, Rossi G, Kister T, Aquaro GD, Passino C, Bonhoeffer P, Festa P. Implications of atrial volumes in surgical corrected Tetralogy of Fallot on clinical adverse events. *Int J Cardiol* 2019;**283**:107–111.
22. Diller G-P, Kempny A, Babu-Narayan SV, Henriks M, Brida M, Uebing A, Lammers AE, Baumgartner H, Li W, Wort SJ, Dimopoulos K, Gatzoulis MA. Machine learning algorithms estimating prognosis and guiding therapy in adult congenital heart disease: data from a single tertiary centre including 10 019 patients. *Eur Heart J* 2019;**40**:1069–1077.
23. Dimopoulos K, Okonko DO, Diller G-P, Broberg CS, Salukhe TV, Babu-Narayan SV, Li W, Uebing A, Bayne S, Wensel R, Piepoli MF, Poole-Wilson PA, Francis DP, Gatzoulis MA. Abnormal ventilatory response to exercise in adults with congenital heart disease relates to cyanosis and predicts survival. *Circulation* 2006;**113**:2796–2802.
24. Egbe AC, Driscoll DJ, Khan AR, Said SS, Akintoye E, Berganza FM, Connolly HM. Cardiopulmonary exercise test in adults with prior Fontan operation: the prognostic value of serial testing. *Int J Cardiol* 2017;**235**:6–10.
25. Egbe AC, Kothapalli S, Borlaug BA, Ammash NM, Najam M, Bajwa N, Tarek K, Mathew J, Connolly HM. Mechanism and risk factors for death in adults with tetralogy of Fallot. *Am J Cardiol* 2019;**124**:803–807.
26. Fernandes SM, Alexander ME, Graham DA, Khairy P, Clair M, Rodriguez E, Pearson DD, Landzberg MJ, Rhodes J. Exercise testing identifies patients at increased risk for morbidity and mortality following Fontan surgery. *Congenit Heart Dis* 2011;**6**:294–303.
27. Giardini A, Specchia S, Berton E, Sangiorgi D, Coutsoumbas G, Gargiulo G, Oppido G, Bonvicini M, Picchio FM. Strong and independent prognostic value of peak circulatory power in adults with congenital heart disease. *Am Heart J* 2007;**154**:441–447.
28. Giardini A, Specchia S, Tacy TA, Coutsoumbas G, Gargiulo G, Donti A, Formigari R, Bonvicini M, Picchio FM. Usefulness of cardiopulmonary exercise to predict long-term prognosis in adults with repaired tetralogy of Fallot. *Am J Cardiol* 2007;**99**:1462–1467.
29. Giardini A, Hager A, Lammers AE, Derrick G, Müller J, Diller G-P, Dimopoulos K, Odendaal D, Gargiulo G, Picchio FM, Gatzoulis MA. Ventilatory efficiency and aerobic capacity predict event-free survival in adults with atrial repair for complete transposition of the great arteries. *J Am Coll Cardiol* 2009;**53**:1548–1555.
30. Gonçalves AV, Mano T, Agapito A, Rosa SA, de Sousa L, Rio P, Alberto J, Monteiro A, da Silva TP, Moreira RI, Soares R, Pinto F, Ferreira RC. Prognostic power of anaerobic threshold parameters in patients with transposition of the great arteries and systemic right ventricle. *Cardiol Young* 2019;**29**:1445–1451.
31. Heng EL, Gatzoulis MA, Uebing A, Sethia B, Uemura H, Smith GC, Diller G-P, McCarthy KP, Ho SY, Li W, Wright P, Spadotto V, Kilner PJ, Oldershaw P, Pennell DJ, Shore DF, Babu-Narayan SV. Immediate and midterm cardiac remodeling after surgical pulmonary valve replacement in adults with repaired tetralogy of Fallot: a prospective cardiovascular magnetic resonance and clinical study. *Circulation* 2017;**136**:1703–1713.
32. Atz AM, Zak V, Mahony L, Uzark K, D'agincourt N, Goldberg DJ, Williams RV, Breitbart RE, Colan SD, Burns KM, Margossian R, Henderson HT, Korsin R, Marino BS, Daniels K, McCrindle BW. Longitudinal outcomes of patients with single ventricle after the Fontan procedure. *J Am Coll Cardiol* 2017;**69**:2735–2744.
33. Inai K, Nakanishi T, Nakazawa M. Clinical correlation and prognostic predictive value of neurohumoral factors in patients late after the Fontan operation. *Am Heart J* 2005;**150**:588–594.
34. Inuzuka R, Diller G-P, Borgia F, Benson L, Tay ELW, Alonso-Gonzalez R, Silva M, Charalambides M, Swan L, Dimopoulos K, Gatzoulis MA. Comprehensive use of cardiopulmonary exercise testing identifies adults with congenital heart disease at increased mortality risk in the medium term. *Circulation* 2012;**125**:250–259.
35. Kowalik E, Klisiewicz A, Kowalski M, Rybicka J, Baranowski R, Biernacka EK, Hoffman P. High-sensitive cardiac troponin T and systemic right ventricular area predict outcomes in adults with congenitally corrected transposition. *Can J Cardiol* 2018;**34**:1129–1136.
36. Müller J, Hager A, Diller G-P, Derrick G, Buys R, Dubowy K-O, Takken T, Orwat S, Inuzuka R, Vanhees L, Gatzoulis M, Giardini A. Peak oxygen uptake, ventilatory efficiency and QRS-duration predict event free survival in patients late after surgical repair of tetralogy of Fallot. *Int J Cardiol* 2015;**196**:158–164.
37. Nathan AS, Loukas B, Moko L, Wu F, Rhodes J, Rathod RH, Systrom DM, Ubeda Tikkanen A, Shafer K, Lewis GD, Landzberg MJ, Opatowsky AR. Exercise oscillatory ventilation in patients with fontan physiology. *Circ Heart Fail* 2015;**8**:304–311.
38. Ohuchi H, Ikado H, Noritake K, Miyazaki A, Yasuda K, Yamada O. Impact of central venous pressure on cardiorenal interactions in adult patients with congenital heart disease after biventricular repair. *Congenit Heart Dis* 2013;**8**:103–110.
39. Ohuchi H, Yasuda K, Miyazaki A, Iwasa T, Sakaguchi H, Shin O, Mizuno M, Negishi J, Noritake K, Yamada O. Comparison of prognostic variables in children and adults with Fontan circulation. *Int J Cardiol* 2014;**173**:277–283.
40. Radojevic J, Inuzuka R, Alonso-Gonzalez R, Borgia F, Giannakoulas G, Prapa M, Liodakis E, Li W, Swan L, Diller GP, Dimopoulos K, Gatzoulis MA. Peak oxygen uptake correlates with disease severity and predicts outcome in adult patients with Ebstein's anomaly of the tricuspid valve. *Int J Cardiol* 2013;**163**:305–308.
41. Rydman R, Gatzoulis MA, Ho SY, Ernst S, Swan L, Li W, Wong T, Sheppard M, McCarthy KP, Roughton M, Kilner PJ. Systemic right ventricular fibrosis detected by cardiovascular magnetic resonance is associated with clinical outcome, mainly new-onset atrial arrhythmia, in patients after atrial redirection surgery for transposition of the great arteries. *Circ Cardiovasc Imaging* 2015;**8**:1–9.
42. Sieweke JT, Haghikia A, Riehle C, Klages C, Akin M, König T, Zwadlo C, Treptau J, Schäfer A, Bauersachs J, Westhoff-Bleck M. Prediction of heart failure and death in an adult population of Fontan patients. *Cardiol Young* 2019;**29**:602–609.
43. Babu-Narayan SV, Diller G-P, Gheta RR, Bastin AJ, Karonis T, Li W, Pennell DJ, Uemura H, Sethia B, Gatzoulis MA, Shore DF. Clinical outcomes of surgical pulmonary valve replacement after repair of tetralogy of Fallot and potential prognostic value of preoperative cardiopulmonary exercise testing. *Circulation* 2014;**129**:18–27.
44. Tsai YJ, Li MH, Tsai WJ, Tuan SH, Liao TY, Lin KL. Oxygen uptake efficiency slope and peak oxygen consumption predict prognosis in children with tetralogy of Fallot. *Eur J Prev Cardiol* 2016;**23**:1045–1050.
45. Valente AM, Gauvreau K, Assenza GE, Babu-Narayan SV, Schreier J, Gatzoulis MA, Groenink M, Inuzuka R, Kilner PJ, Koyak Z, Landzberg MJ, Mulder B, Powell AJ, Wald R, Geva T. Contemporary predictors of death and sustained ventricular tachycardia in patients with repaired tetralogy of Fallot enrolled in the INDICATOR cohort. *Heart* 2014;**100**:247–253.
46. van der Bom T, Winter MM, Groenink M, Vliegen HW, Pieper PG, van Dijk APJ, Sieswerda GT, Roos-Hesselink JW, Zwiderman AH, Mulder BJM, Bouma BJ. Right ventricular end-diastolic volume combined with peak systolic blood pressure during exercise identifies patients at risk for complications in adults with a systemic right ventricle. *J Am Coll Cardiol* 2013;**62**:926–936.
47. Yogeswaran V, Connolly HM, Al-Otaibi M, Ammash NM, Warnes CA, Said SM, Egbe AC. Prognostic role of hypertensive response to exercise in patients with repaired coarctation of aorta. *Can J Cardiol* 2018;**34**:676–682.

48. Brida M, Dimopoulos K, Kempny A, Lioudakis E, Alonso-Gonzalez R, Swan L, Uebing A, Baumgartner H, Gatzoulis MA, Diller G-P. Body mass index in adult congenital heart disease. *Heart* 2017;**103**:1250–1257.
49. Buys R, Van De Bruene A, De Meester P, Budts W, Vanhees L. Predictors of mid-term event-free survival in adults with corrected tetralogy of Fallot. *Acta Cardiol* 2012;**67**:415–421.
50. Chen C-A, Chen S-Y, Chiu H-H, Wang J-K, Chang C-I, Chiu I-S, Chen Y-S, Lu C-W, Lin M-T, Lue H-C, Hua Y-C, Wu M-H. Prognostic value of submaximal exercise data for cardiac morbidity in Fontan patients. *Med Sci Sport Exerc* 2014;**46**:10–15.
51. Cunningham JW, Nathan AS, Rhodes J, Shafer K, Landzberg MJ, Opatowsky AR. Decline in peak oxygen consumption over time predicts death or transplantation in adults with a Fontan circulation. *Am Heart J* 2017;**189**:184–192.
52. Diller G-P, Dimopoulos K, Okonko D, Uebing A, Broberg CS, Babu-Narayan S, Bayne S, Poole-Wilson PA, Sutton R, Francis DP, Gatzoulis MA. Heart rate response during exercise predicts survival in adults with congenital heart disease. *J Am Coll Cardiol* 2006;**48**:1250–1256.
53. Diller G-P, Giardini A, Dimopoulos K, Gargiulo G, Muller J, Derrick G, Giannakoulas G, Khambadkone S, Lammers AE, Picchio FM, Gatzoulis MA, Hager A. Predictors of morbidity and mortality in contemporary Fontan patients: results from a multicenter study including cardiopulmonary exercise testing in 321 patients. *Eur Heart J* 2010;**31**:3073–3083.
54. Alsaied T, van der Ven JPG, Juggan S, Sleeper LA, Azcue N, Kroft LJ, Powell AJ, Helbing WA, Rathod RH. Relation of Fontan baffle stroke volume to Fontan failure and lower exercise capacity in patients with an atriopulmonary Fontan. *Am J Cardiol* 2019;**124**:151–157.
55. Bauer B, Aboulhosn J, Williams R, Child J. Patients with single-ventricle physiology: prognostic implications of stress testing. *Pediatr Cardiol* 2011;**32**:891–895.
56. Ohuchi H, Tanabe Y, Kamiya C, Noritake K, Yasuda K, Miyazaki A, Ikeda T, Yamada O. Cardiopulmonary variables during exercise predict pregnancy outcome in women with congenital heart disease. *Circ J* 2013;**77**:470–476.
57. Ohuchi H, Negishi J, Miike H, Toyoshima Y, Morimoto H, Fukuyama M, Iwasa T, Sakaguchi H, Miyazaki A, Shiraishi I, Kurosaki K, Nakai M. Positive pediatric exercise capacity trajectory predicts better adult Fontan physiology rationale for early establishment of exercise habits. *Int J Cardiol* 2019;**274**:80–87.
58. Shafer KM, Opatowsky AR, Rhodes J. Exercise testing and spirometry as predictors of mortality in congenital heart disease: contrasting Fontan physiology with repaired tetralogy of Fallot. *Congenit Heart Dis* 2018;**13**:903–910.
59. Srivastava NT, Hurwitz R, Kay WA, Eckert GJ, Kuhlenhoelter A, DeGrave N, Ebenroth ES. The long-term functional outcome in Mustard patients study: another decade of follow-up. *Congenit Heart Dis* 2019;**14**:176–184.
60. Birkey T, Dixon J, Jacobsen R, Ginde S, Nugent M, Yan K, Simpson P, Kovach J. Cardiopulmonary exercise testing for surgical risk stratification in adults with congenital heart disease. *Pediatr Cardiol* 2018;**39**:1468–1475.
61. Bredy C, Ministeri M, Kempny A, Alonso-Gonzalez R, Swan L, Uebing A, Diller G-P, Gatzoulis MA, Dimopoulos K. New York Heart Association (NYHA) classification in adults with congenital heart disease: Relation to objective measures of exercise and outcome. *Eur Heart J Qual Care Clin Outcomes* 2018;**4**:51–58.
62. DeFaria Yeh D, Stefanescu Schmidt AC, Eisman AS, Serfas JD, Naqvi M, Younis MA, Ryfa AD, Khan AA, Safi L, Tabtabai SR, Bhatt AB, Lewis GD. Impaired right ventricular reserve predicts adverse cardiac outcomes in adults with congenital heart disease. *Heart* 2018;**104**:2044–2050.
63. Egbe AC, Connolly HM, Dearani JA, Bonnicksen CR, Niaz T, Allison TG, Johnson JN, Poterucha JT, Said SM, Ammash NM. When is the right time for Fontan conversion? The role of cardiopulmonary exercise test. *Int J Cardiol* 2016;**220**:564–568.
64. Lin EY, Cohen HW, Bhatt AB, Stefanescu A, Dudzinski D, DeFaria Yeh D, Johnson J, Lui GK. Predicting outcomes using the heart failure survival score in adults with moderate or complex. *Congenit Heart Dis* 2015;**10**:387–395.
65. Lui GK, Silversides CK, Khairy P, Fernandes SM, Valente AM, Nickolaus MJ, Earing MG, Aboulhosn JA, Rosenbaum MS, Cook S, Kay JD, Jin Z, Gersony DR; Alliance for Adult Research in Congenital Cardiology (AARCC). Heart rate response during exercise and pregnancy outcome in women with congenital heart disease. *Circulation* 2011;**123**:242–248.
66. Lytrivi ID, Blume ED, Rhodes J, Dillis S, Gauvreau K, Singh TP. Prognostic value of exercise testing during heart transplant evaluation in children. *Circ Hear Fail* 2013;**6**:792–799.
67. Müller J, Ewert P, Hager A. Number of thoracotomies predicts impairment in lung function and exercise capacity in patients with congenital heart disease. *J Cardiol* 2018;**71**:88–92.
68. Stout KK, Daniels CJ, Aboulhosn JA, Bozkurt B, Broberg CS, Colman JM, Crumb SR, Dearani JA, Fuller S, Gurvitz M, Khairy P, Landzberg MJ, Saidi A, Valente AM, Van Hare GF. 2018 AHA/ACC Guideline for the management of adults with congenital heart disease: a report of the American College of Cardiology/American Heart Association Task Force on Clinical Practice Guidelines. *Circulation* 2019;**139**:698–800.
69. Wadey CA, Pielek G, Stuart G, Taylor R, Long L, Williams CA. Cochrane corner: Physical activity interventions for people with congenital heart disease. *Heart* 2021;**107**:447–449.
70. Kempny A, Dimopoulos K, Uebing A, Mocerri P, Swan L, Gatzoulis MA, Diller G-P. Reference values for exercise limitations among adults with congenital heart disease. Relation to activities of daily life—single centre experience and review of published data. *Eur Heart J* 2012;**33**:1386–1396.
71. Budts W, Pielek GE, Roos-Hesselink JW, Sanz M, Garza D, D'Ascenzi F, Giannakoulas G, Müller J, Oberhoffer R, Ehringer-Schetitska D, Herceg-Cavrak V, Gabriel H. Recommendations for participation in competitive sport in adolescent and adult athletes with congenital heart disease. *Eur Heart J* 2020;**41**:4191–4199.
72. Cedars A, Kutty S. The way forward in congenital heart disease research. *JAMA Cardiol* 2020;**5**:979–980.
73. Riley RD, Debray TPA, Fisher D, Hattle M, Marlin N, Hoogland J, Gueyffier F, Staessen JA, Wang J, Moons KGM, Reitsma JB, Ensor J. Individual participant data meta-analysis to examine interactions between treatment effect and participant-level covariates: statistical recommendations for conduct and planning. *Stat Med* 2020;**39**:2115–2137.
74. McShane LM, Altman DG, Sauerbrei W, Taube SE, Gion M, Clark GM; Statistics Subcommittee of the NCI-EORTC Working Group on Cancer Diagnostics. Reporting recommendations for tumour MARKer prognostic studies (REMARK). *Br J Cancer* 2005;**93**:387–391.
75. Collins G, Reitsma J, Altman D, Moons K; TRIPOD Group. Transparent reporting of a multivariable prediction model for individual prognosis or diagnosis (TRIPOD): explanation and elaboration. *Circulation* 2015;**131**:211–219.
76. Barker AR, Williams CA, Jones AM, Armstrong N. Establishing maximal oxygen uptake in young people during a ramp cycle test to exhaustion. *Br J Sports Med* 2011;**45**:498–503.